

AUSTRALIAN CRANE & MACHINERY PTY LTD

Certified System



ISO 9001

ACM 105SP Overhead Wire Maintenance Vehicle



**Keeping
it all
on track**

Telephone: 03 9357 7524 Fax: 03 9357 7521

www.australiancrane.com.au

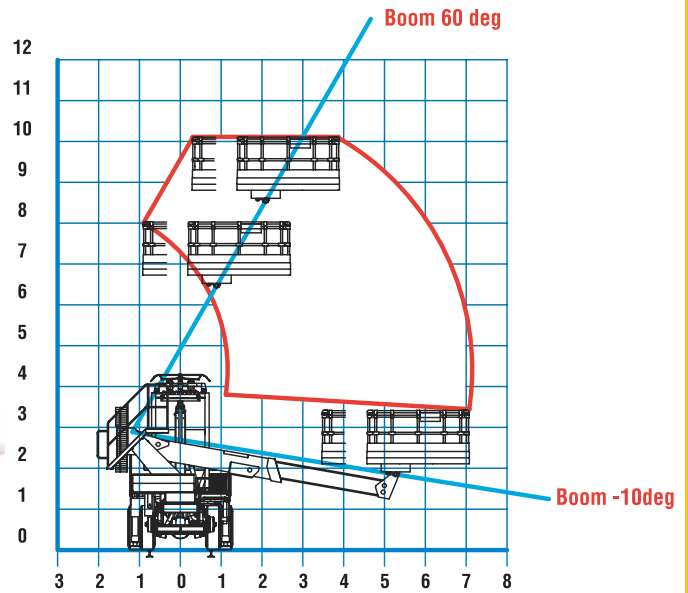
ACM 105SP

Overhead Wire Maintenance Vehicle



PLATFORM RANGE CHART
360° ROTATION
(WSB not available)

Blue Zone, Stationary mode (Outrigger down)
Max platform reach: 7.1m + 1m arm



ACM 105SP SPECIFICATIONS

Overhead wire maintenance vehicle	Mercedes Benz Atego 1629 4x4 truck
Gross weight	16 ton GVM
Maximum working height	10.5 meters from rail level
Maximum outreach	7 meters
Basket (fully insulated)	2.5m x 2.0m, 450kgs capacity
Hetronic remote controller	

Speeds	
Maximum speed on road	100km/hour
Maximum speed on rail	30km/hour
Maximum speed in work mode	10km/hour

Hi Rail	
Hi Rail standard gauge	1,435mm
Front bumper bar	
Tow bar assembly	

Wire boom support	
Maximum height from the rail level	7.5m
Vertical swing capability of 30° either side of vertical	
Wire boom support head (insulated)	
Maximum load of 500kgs horizontally & 500kgs vertically at 6.5 meters height	

Pantograph and recording package	
Austbreck pantograph	
Pantograph recording device	

Lighting	
LED lighting in the basket	
Ground lighting	
Energy efficient work lighting for ground work	
Adjustable directional lights on platform	

Work modes	
Stationary (No Hi Rail)	Outriggers fully extended
Hi Rail load chart walking	No outriggers
Hi Rail load chart stationary	Minimum outriggers deployed
Hi Rail load chart stationary	Outriggers deployed and fully extended

Safety Equipment	AS1418.10&EN 280 compliant
Boom anti-collision system	
Automatic speed control/reduction/soft stop system	
Boom and basket/bucket automatic stowing system	
Emergency stop/emergency pump	
Hydraulic cylinder lock valves/hydraulic safety valves	
Outriggers indicator, lower controller	
Load moment indicator	
Emergency descent devices	



AUSTRALIAN CRANE & MACHINERY PTY LTD

HEAD OFFICE:
42 Glenbarry Road,
Campbellfield VIC 3061 Australia
Tel: +61 (03) 9357 7524
Fax: +61 (03) 9357 7521

www.australiancrane.com.au